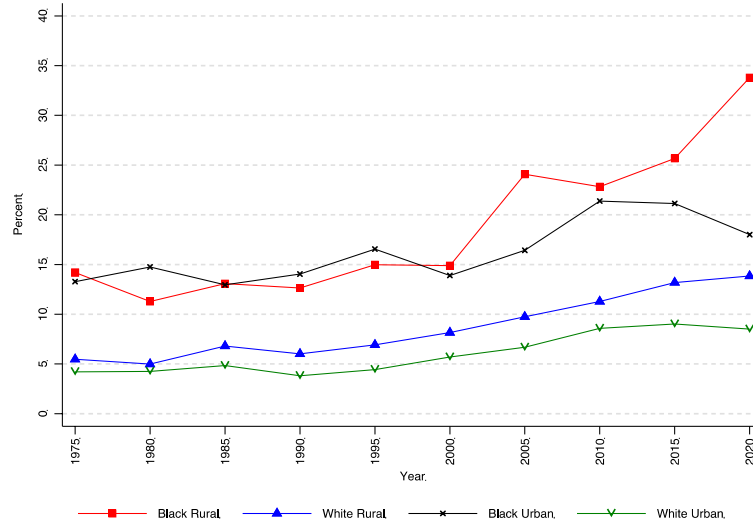


**Online Appendix to  
Stalled Progress? Five Decades of Black-White and Rural-Urban Income Gaps**

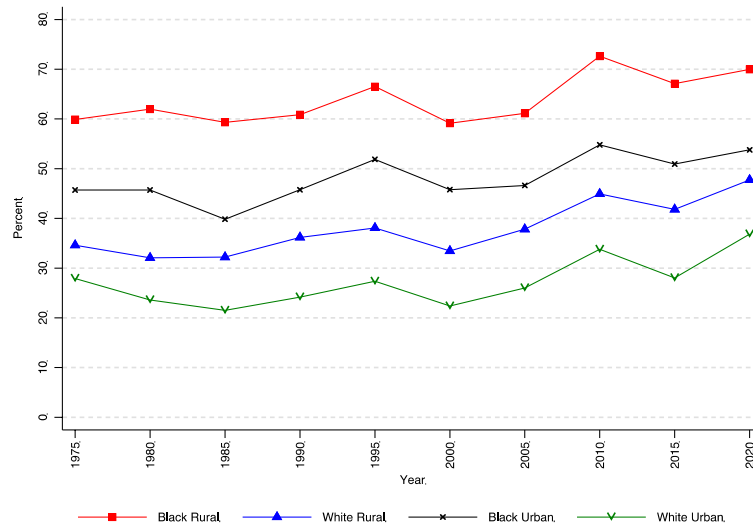
Bradley L. Hardy, Georgetown University  
Shria Holla, University of Kentucky  
Elizabeth S. Krause, University of Kentucky  
James P. Ziliak, University of Kentucky

Appendix Figure 1. Share of Households Without Labor-Market Earnings



Source: Current Population Survey Annual Social and Economic Supplement, 1976-2021

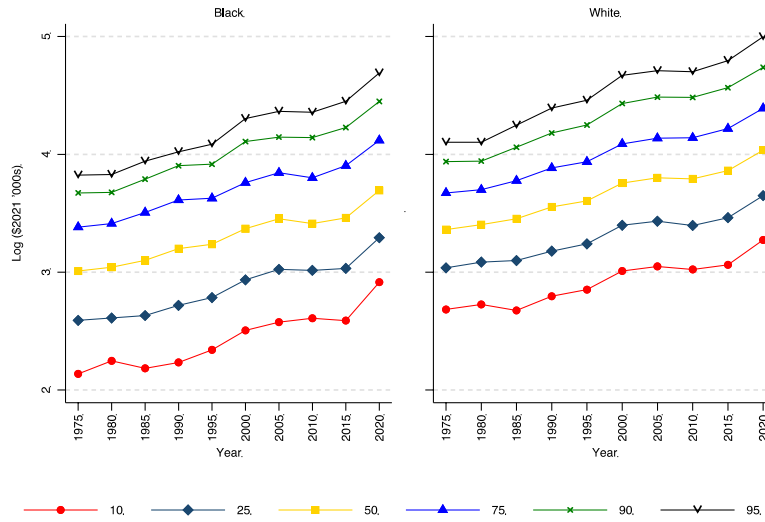
Appendix Figure 2. Share of Households Receiving Social Insurance, Means-Tested Transfers, or Refundable Tax Credits



Note: Social insurance, transfers and tax credits include Disability Insurance, Social Security, Unemployment Insurance, Veteran's Payments, Workers Compensation, Temporary Assistance for Needy Families, General Assistance, Supplemental Security Income, Supplemental Nutrition Assistance Program, Earned Income Tax Credit, and the Child Tax Credit (refundable portion).

Source: Current Population Survey Annual Social and Economic Supplement, 1976-2021

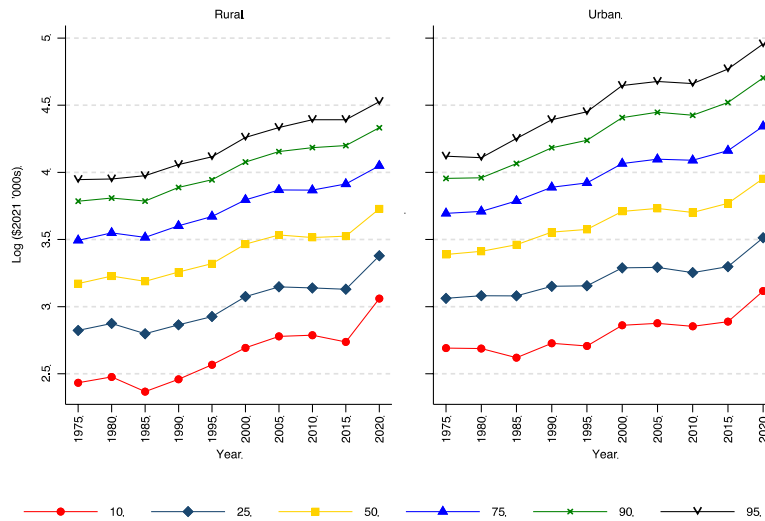
Appendix Figure 3. Trends in Log Equivalized Disposable Income by Race



*Note:* Disposable income is the sum of earnings and nonlabor income less federal, state, and payroll tax payments (inclusive of refundable tax credits). Sample is restricted to households with positive disposable income, earnings, and earnings plus nonlabor incomes. Earnings and incomes are in real '000s using the 2021 PCE and equivalized using the modified OECD scale. See text for details.

*Source:* Current Population Survey Annual Social and Economic Supplement, 1976-2021

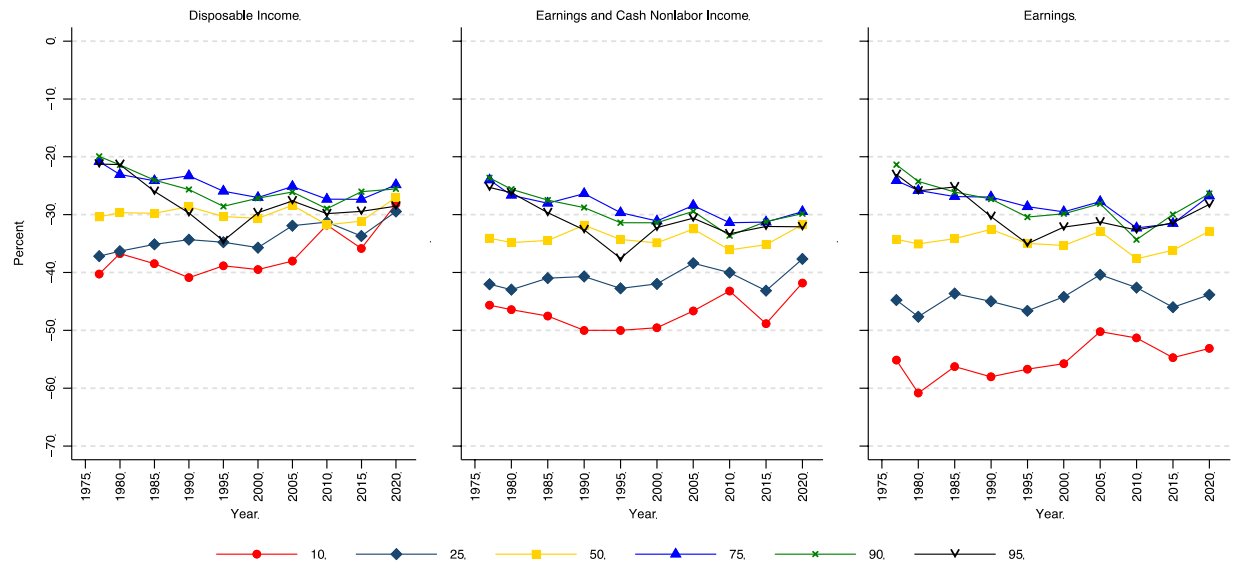
Appendix Figure 4. Trends in Log Equivalized Disposable Income by Geography



*Note:* Disposable income is the sum of earnings and nonlabor income less federal, state, and payroll tax payments (inclusive of refundable tax credits). Sample is restricted to households with positive disposable income, earnings, and earnings plus nonlabor incomes. Earnings and incomes are in real '000s using the 2021 PCE and equivalized using the modified OECD scale. See text for details.

*Source:* Current Population Survey Annual Social and Economic Supplement, 1976-2021

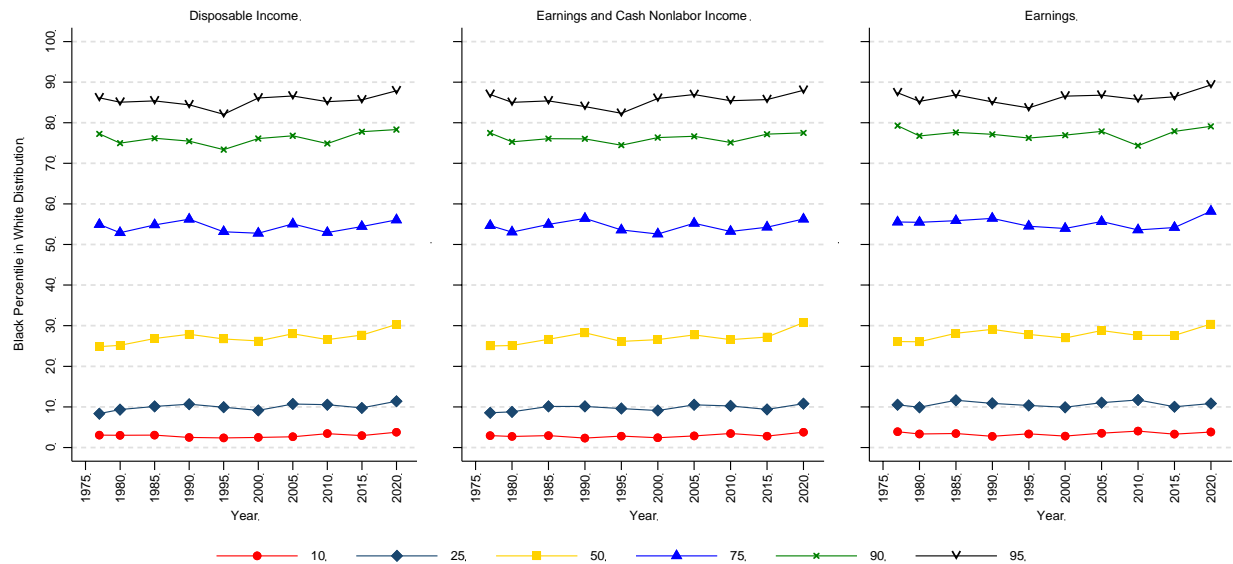
Appendix Figure 5. Black-White Disposable Income and Earnings Level Gaps by Percentile with State Fixed Effects



*Note:* Disposable income is the sum of earnings and nonlabor income less federal, state, and payroll tax payments (inclusive of refundable tax credits). Sample is restricted to households with positive disposable income, earnings, and earnings plus nonlabor incomes. Earnings and incomes are in real '000s using the 2021 PCE and equivalized using the modified OECD scale. See text for details.

*Source:* Current Population Survey Annual Social and Economic Supplement, 1976-2021

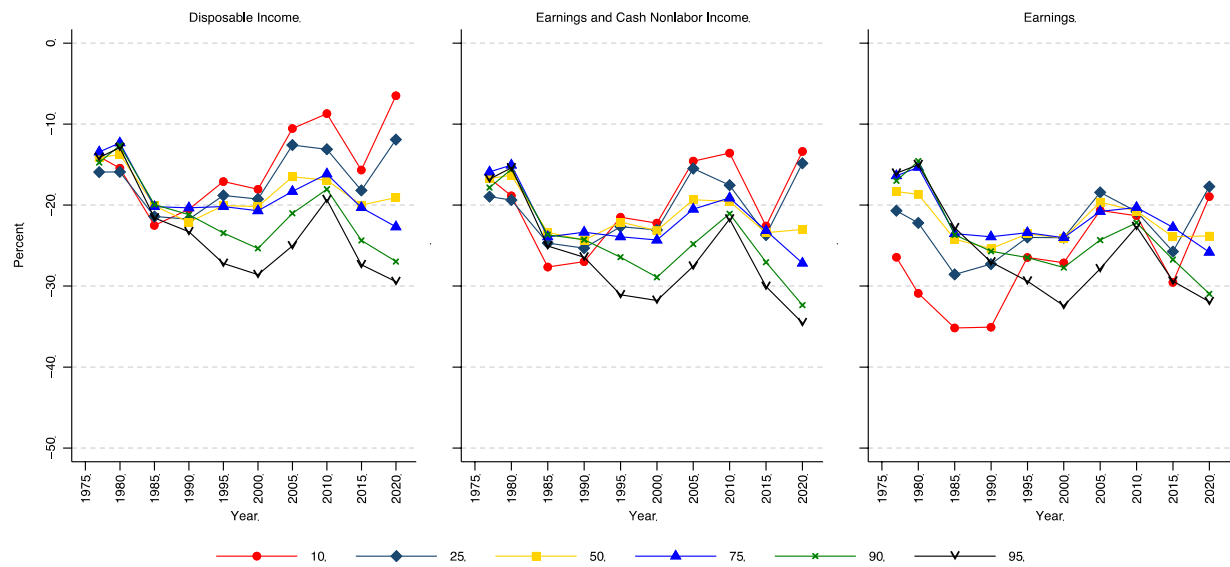
Appendix Figure 6. Black-White Disposable Income and Earnings Rank Gaps by Percentile with State Fixed Effects



*Note:* Disposable income is the sum of earnings and nonlabor income less federal, state, and payroll tax payments (inclusive of refundable tax credits). Sample is restricted to households with positive disposable income, earnings, and earnings plus nonlabor incomes. Earnings and incomes are in real '000s using the 2021 PCE and equivalized using the modified OECD scale. See text for details.

*Source:* Current Population Survey Annual Social and Economic Supplement, 1976-2021

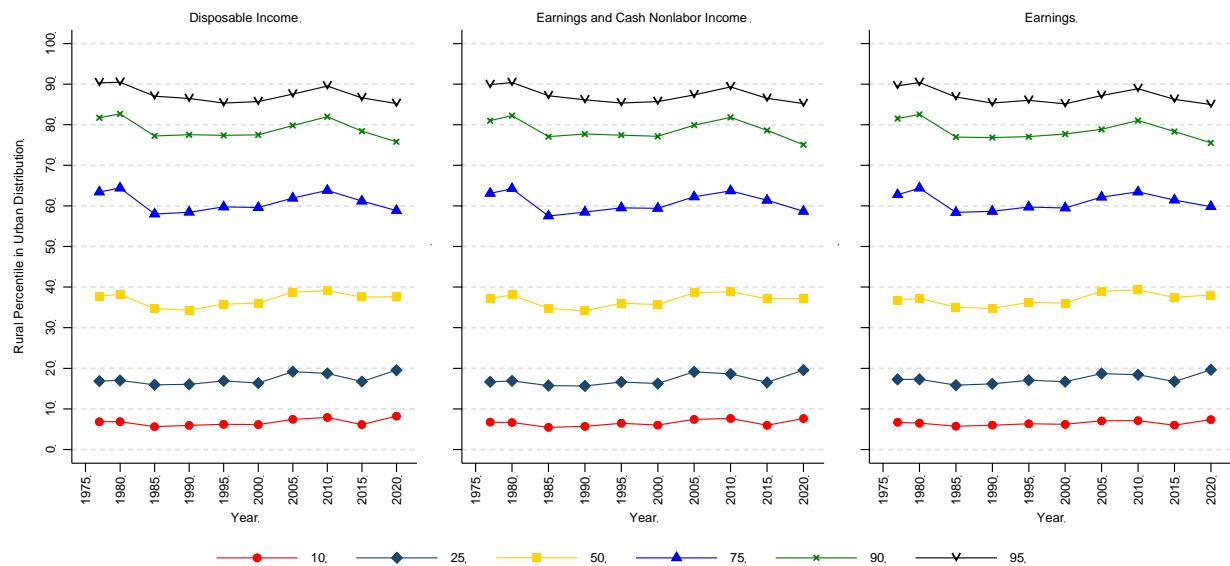
Appendix Figure 7. Rural-Urban Disposable Income and Earnings Level Gaps by Percentile with State Fixed Effects



*Note:* Disposable income is the sum of earnings and nonlabor income less federal, state, and payroll tax payments (inclusive of refundable tax credits). Sample is restricted to households with positive disposable income, earnings, and earnings plus nonlabor incomes. Earnings and incomes are in real '000s using the 2021 PCE and equivalized using the modified OECD scale. See text for details.

*Source:* Current Population Survey Annual Social and Economic Supplement, 1976-2021

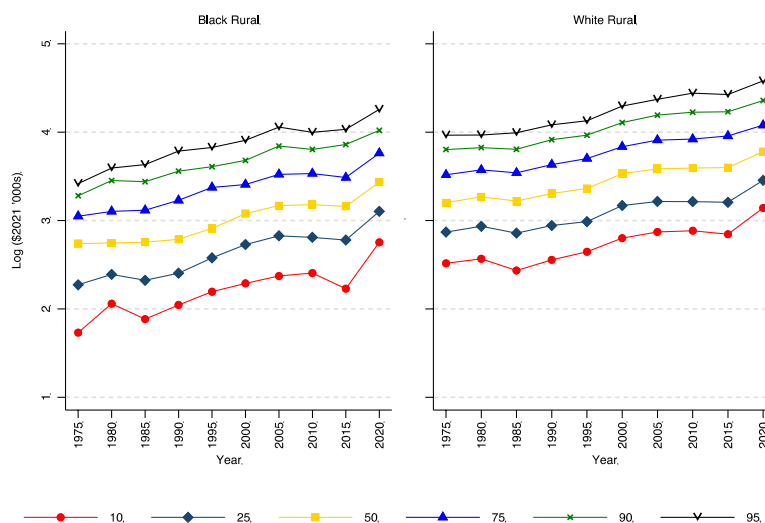
Appendix Figure 8. Rural-Urban Disposable Income and Earnings Rank Gaps by Percentile with State Fixed Effects



*Note:* Disposable income is the sum of earnings and nonlabor income less federal, state, and payroll tax payments (inclusive of refundable tax credits). Sample is restricted to households with positive disposable income, earnings, and earnings plus nonlabor incomes. Earnings and incomes are in real '000s using the 2021 PCE and equivalized using the modified OECD scale. See text for details.

*Source:* Current Population Survey Annual Social and Economic Supplement, 1976-2021

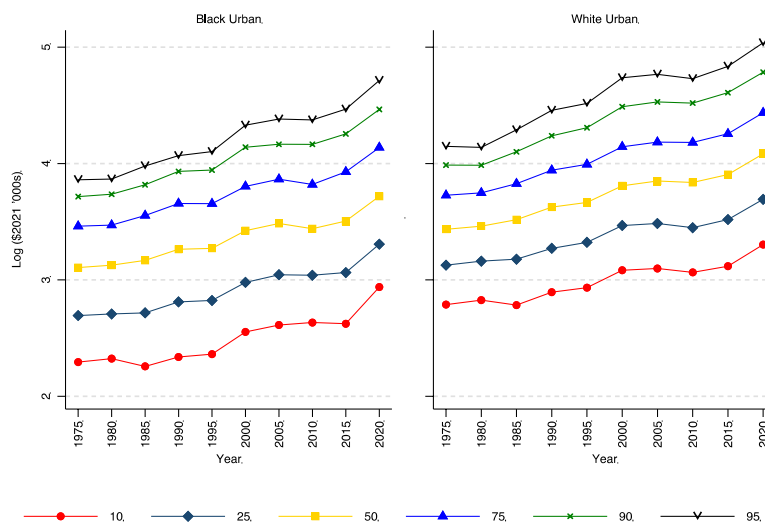
Appendix Figure 9. Trends in Log Equivalized Disposable Income by Race, Rural



*Note:* Disposable income is the sum of earnings and nonlabor income less federal, state, and payroll tax payments (inclusive of refundable tax credits). Sample is restricted to households with positive disposable income, earnings, and earnings plus nonlabor incomes. Earnings and incomes are in real '000s using the 2021 PCE and equivalized using the modified OECD scale. See text for details.

*Source:* Current Population Survey Annual Social and Economic Supplement, 1976-2021

Appendix Figure 10. Trends in Log Equivalized Disposable Income by Race, Urban



*Note:* Disposable income is the sum of earnings and nonlabor income less federal, state, and payroll tax payments (inclusive of refundable tax credits). Sample is restricted to households with positive disposable income, earnings, and earnings plus nonlabor incomes. Earnings and incomes are in real '000s using the 2021 PCE and equivalized using the modified OECD scale. See text for details.

*Source:* Current Population Survey Annual Social and Economic Supplement, 1976-2021

Appendix Table 1. Summary Statistics

Variable	Pooled		Black		White		Rural		Urban	
	Mean	Std. Dev.	Mean	Std. Dev.	Mean	Std. Dev.	Mean	Std. Dev.	Mean	Std. Dev.
White Non-Hispanic	0.72	0.45	0.00	0.00	1.00	0.00	0.85	0.36	0.69	0.46
Black Non-Hispanic	0.11	0.32	1.00	0.00	0.00	0.00	0.08	0.27	0.12	0.33
Hispanic or Other Race	0.17	0.37	0.00	0.00	0.00	0.00	0.07	0.25	0.19	0.39
Metro	0.82	0.39	0.87	0.34	0.78	0.41	0.00	0.00	1.00	0.00
Age	41.22	10.23	40.76	10.18	41.65	10.29	41.75	10.35	41.10	10.20
Less than High School	0.14	0.35	0.19	0.39	0.10	0.30	0.19	0.39	0.13	0.33
High School	0.32	0.47	0.36	0.48	0.32	0.47	0.40	0.49	0.30	0.46
Some College	0.25	0.43	0.27	0.44	0.26	0.44	0.24	0.42	0.26	0.44
College or More	0.29	0.45	0.19	0.39	0.32	0.47	0.17	0.38	0.32	0.47
Married	0.64	0.48	0.41	0.49	0.69	0.46	0.70	0.46	0.63	0.48
Widowed, Divorced, or Separated	0.16	0.37	0.24	0.43	0.15	0.36	0.16	0.37	0.16	0.37
Never Married	0.20	0.40	0.36	0.48	0.16	0.37	0.13	0.34	0.21	0.41
Female	0.50	0.50	0.54	0.50	0.49	0.50	0.50	0.50	0.50	0.50
Household Size	3.14	1.55	3.10	1.74	3.03	1.43	3.20	1.53	3.13	1.55
Equivalentized Earnings (\$2021 '000s)	47.01	52.09	31.07	38.19	51.24	54.01	33.51	33.71	50.05	54.94
Equivalentized Nonlabor Income (\$2021 '000s)	5.95	14.21	4.87	9.83	6.53	15.31	5.09	11.37	6.14	14.76
Equivalentized Disposable Income (\$2021 '000s)	41.28	35.27	29.74	26.37	44.39	36.42	31.38	23.34	43.51	37.08

Source: Current Population Survey Annual Social and Economic Supplement, 1976-2021