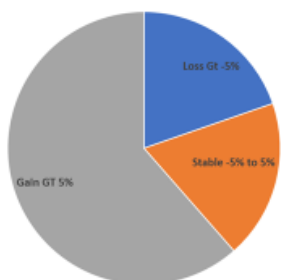


On-Line Appendices

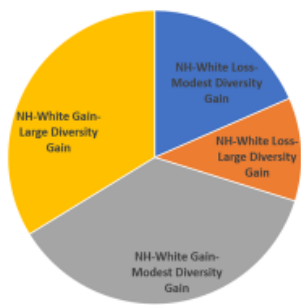
On-Line Appendix 1

Distribution of D 's Across US Nonmetropolitan Counties,
defined in 2018

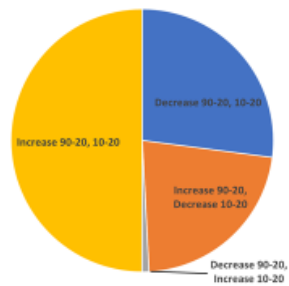
Nonmetropolitan 2020 Population Distribution
by Pattern of Population Change, 1990 to 2020



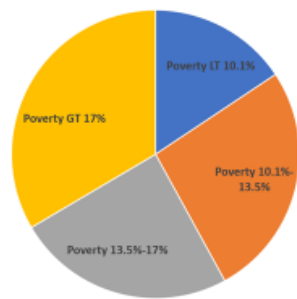
Nonmetropolitan 2020 Population Distribution
by Diversity Pattern, 1990 to 2020



Nonmetropolitan Population 2020 by Pattern of Natural Increase
and Decrease, 1990 to 2020 and 2010 to 2020

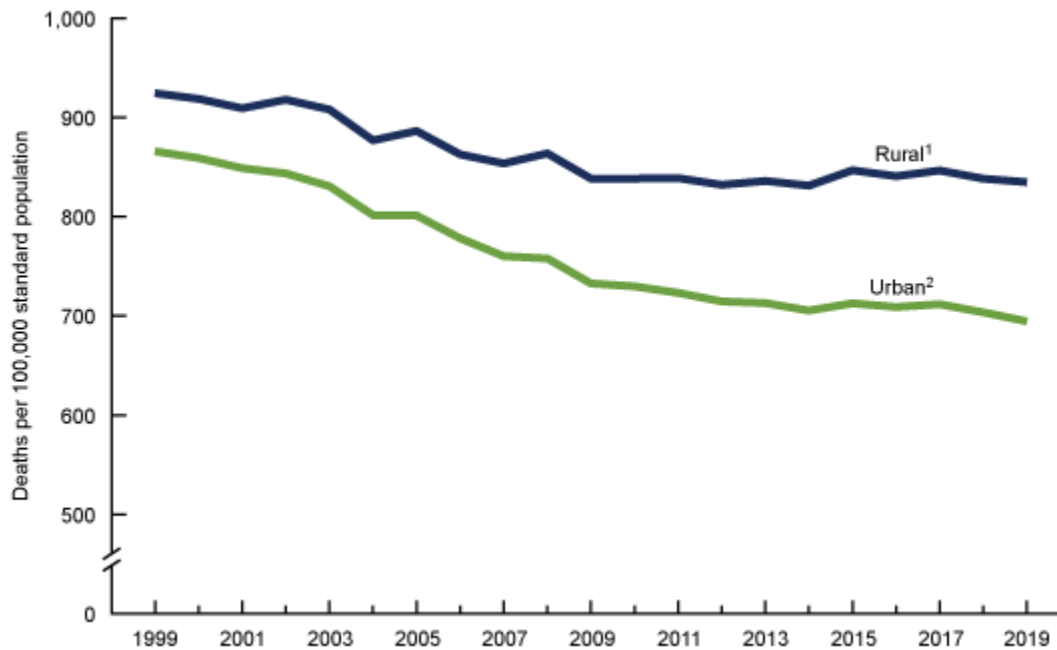


Nonmetropolitan 2020 Population Distribution
by Percent in Poverty, 2020



On-Line Appendix 2

Age-Adjusted Death Rates, 1959-2019

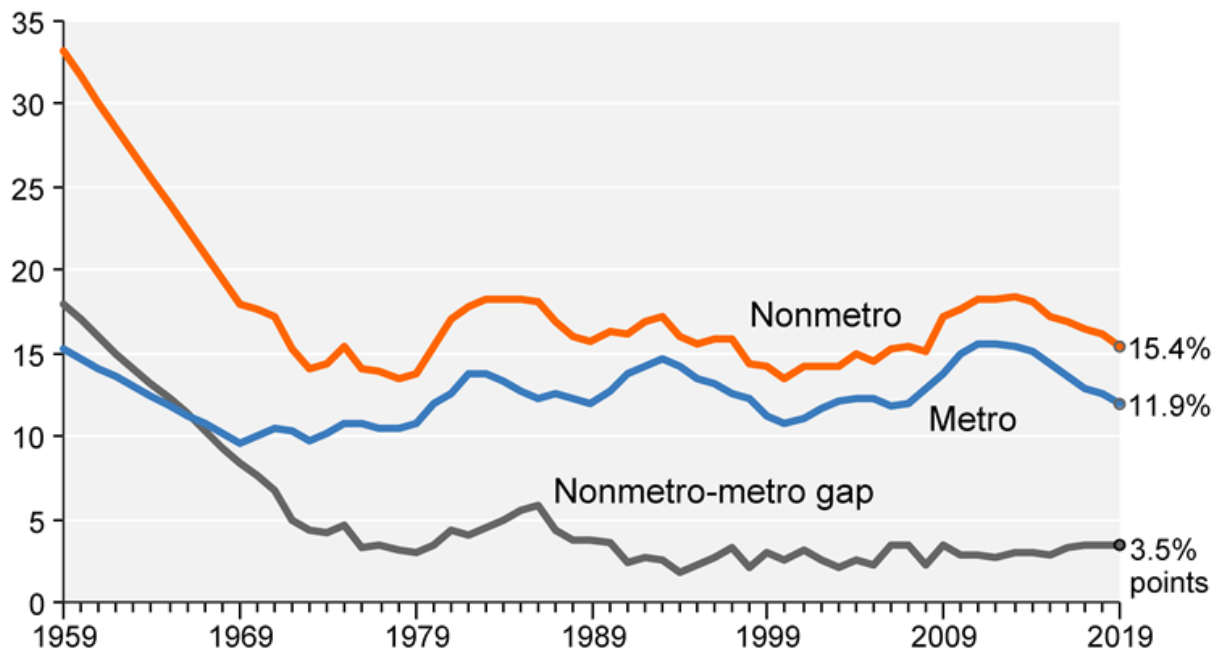


These are based on a 2000 national standard age population. 1Significant decreasing trend from 1999 through 2010; stable trend from 2010 through 2019 ($p < 0.05$). 2Significant decreasing trend from 1999 through 2019, with different rates of change over time ($p < 0.05$).

SOURCE: National Center for Health Statistics, National Vital Statistics System, Mortality.

U.S. poverty rates in metro and nonmetro areas, 1959-2019

Percent poor (persons)



Note: Metro status of some counties changed in 1984, 1994, 2004, 2014, and 2018.
Source: USDA, Economic Research Service using data from U.S. Department of Commerce, Bureau of the Census, Current Population Survey (CPS) for 1960-2009 and annual American Community Survey (ACS) estimates for 2009-19. CPS poverty status is based on family income in prior year and ACS poverty status is based on family income in the past 12 months.